



## Sya Castle, The Floating City :

Trainers have technology that is called Other Dimension. This technology does not exist in the civilizations of other dimensions yet, but they already have simple space travel technology. Now it is possible to go anywhere in the universe, as though it were an expanded Earth, with this technology. However, there are differences in poverty and technical development just like the Earth nowadays, so there is a difference in technical development among the planets. Sya Castle is a solitary floating city. The city is built on a small planet that is equipped with a floating device, but no one knows where it is going because it has no fixed orbit. Almost all of the species in the universe have lived on this planet, and the people of Earth named it Sya Castle. If Hikariko want to meet each other somewhere in the universe, then they do so on Sya Castle. Sya Castle is similar to a large city on Earth. The difference is that the size of the city is larger and space technology has advanced further than the technology on Earth. You can see tall buildings and airports above the clouds because spaceships and airships are quite popular there.

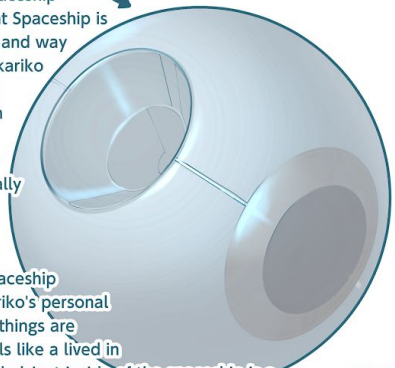


The entire capital is covered in red when the floating city, Sya Castle, passes by the red moon.

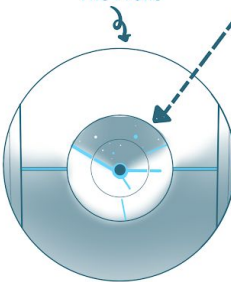


**Artificially Intelligent Spaceship :**

The Artificially Intelligent Spaceship is an ordinary living space and way to get around for the Hikariko and Trainers. There is a device that can maintain the Other Dimension within the spaceship, so the inside of the Artificially Intelligent Spaceship is the world of the Other Dimension. The Other Dimension inside the spaceship looks nice, but the Hikariko's personal stuff and miscellaneous things are in there as well so it feels like a lived in space. The spiral-shaped object inside of the spaceship is a device that collects emotional energy and is also able to upload the emotional energy to the Trainer's home planet.



**The Front**

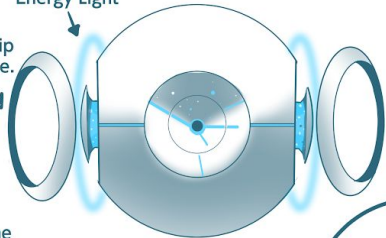


**Spaceship Radar :**

When you start up the spaceship, the destination is displayed on the concave metal surface. The longest line of light will turn around and around and the radar information updates each time that it goes around. The second longest line of light points in the direction that the spaceship is going in.

**Energy Light**

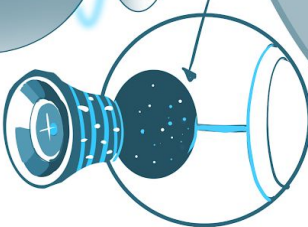
The spaceship in flight mode.



The look of the spaceship when it is floating in space.

The look of the spaceship when you open the door.

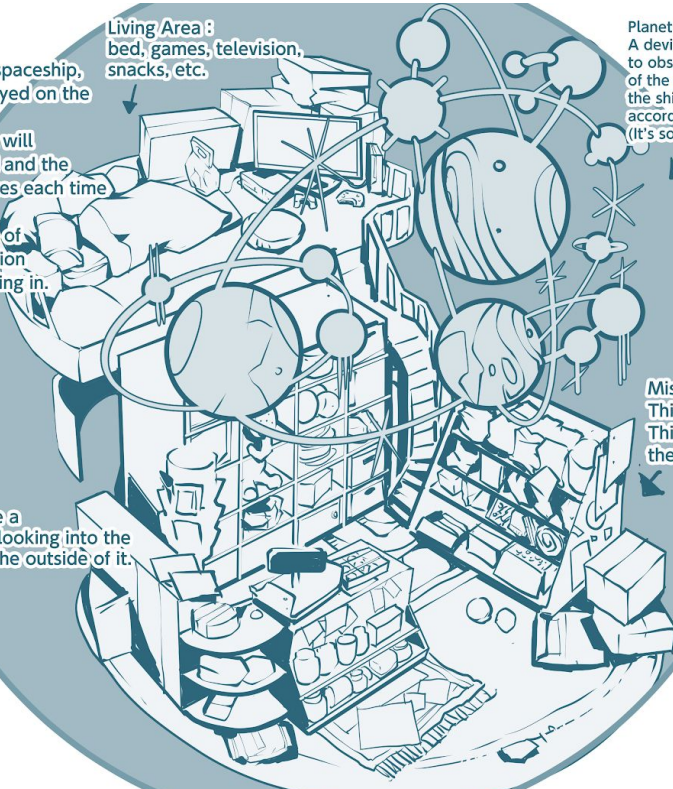
Artificially Intelligent Machine



You can only see a starry sky when looking into the spaceship from the outside of it.

**Living Area :**

bed, games, television, snacks, etc.

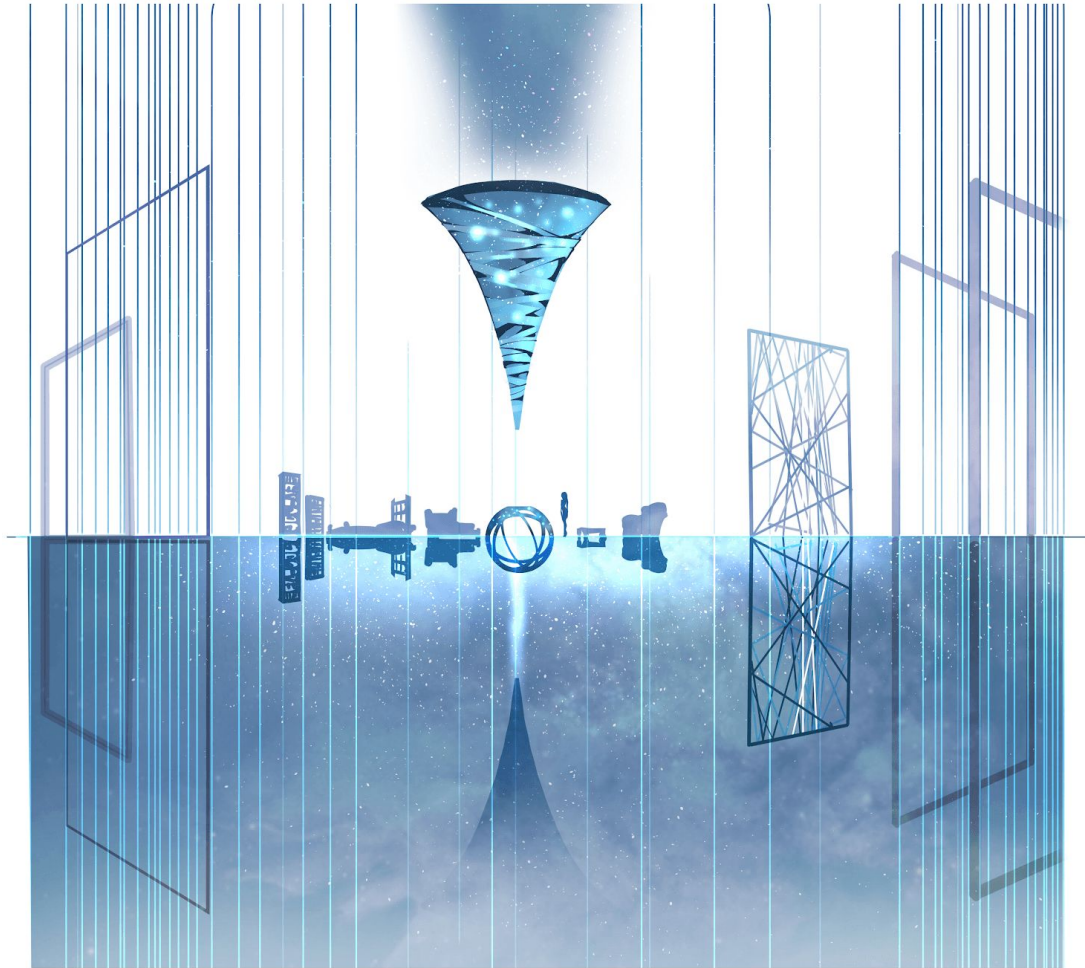


**Planet Location Device :**

A device that allows you to observe the location of the planets from inside the ship. It changes according to your location. (It's something like a GPS.)

**Miscellaneous Things Area :**

Things that improve their life.



#### Other Dimension :

Trainers have technology that is called Other Dimension. The Other Dimension does not exist in the real world because it exists, not in 3-dimensional space, but in a separate dimension. However, there is a concept of time in the Other Dimension just like in the real world. There is only one exit/entrance for the Other Dimension and real world. The Other Dimension may appear infinite, but in reality it is not like that. Hikariko and Trainers can both create the Other Dimension.

It's also possible to bring other creatures into the Other Dimension and change their feelings into energy there, but there is a risk that the creature will turn into a Moneta while they are doing so.

If Dark Hikariko invade the Other Dimension, it closes for a while and becomes impossible to exit or enter the space. The only way to leave the Other Dimension is to kill the Dark Hikariko.